



Epson SureColor P7500 | P9500

Production Photo, Fine Art and Proofing

 (+34) 968 722 350

 arkipLOT@arkipLOT.com

Official Team Partner

EPSON
EXCEED YOUR VISION



AMG
PETRONAS
MOTORSPORT

EPSON[®]
EXCEED YOUR VISION

The Art of Performance

Creemos que la tecnología tiene el poder de empujar los límites creativos, superar los límites de la imaginación e impulsar el arte a nuevas alturas. Es por eso que, después de 20 años de perfeccionar la tecnología de impresión de gran formato, estamos listos para presentar nuestra impresora más avanzada hasta la fecha, diseñada para transformar su visión artística en una experiencia verdaderamente inolvidable.

Introducción al SureColor P7500 & SureColor P9500



The SureColor P7500 and P9500 products use only genuine Epson-brand cartridges. Other brands of ink cartridges and ink supplies are not compatible and, even if described as compatible, may not function properly.

Printer Overview



© Monica Stevenson

**Epson SureColor P7500
24" Wide**

precio consultar

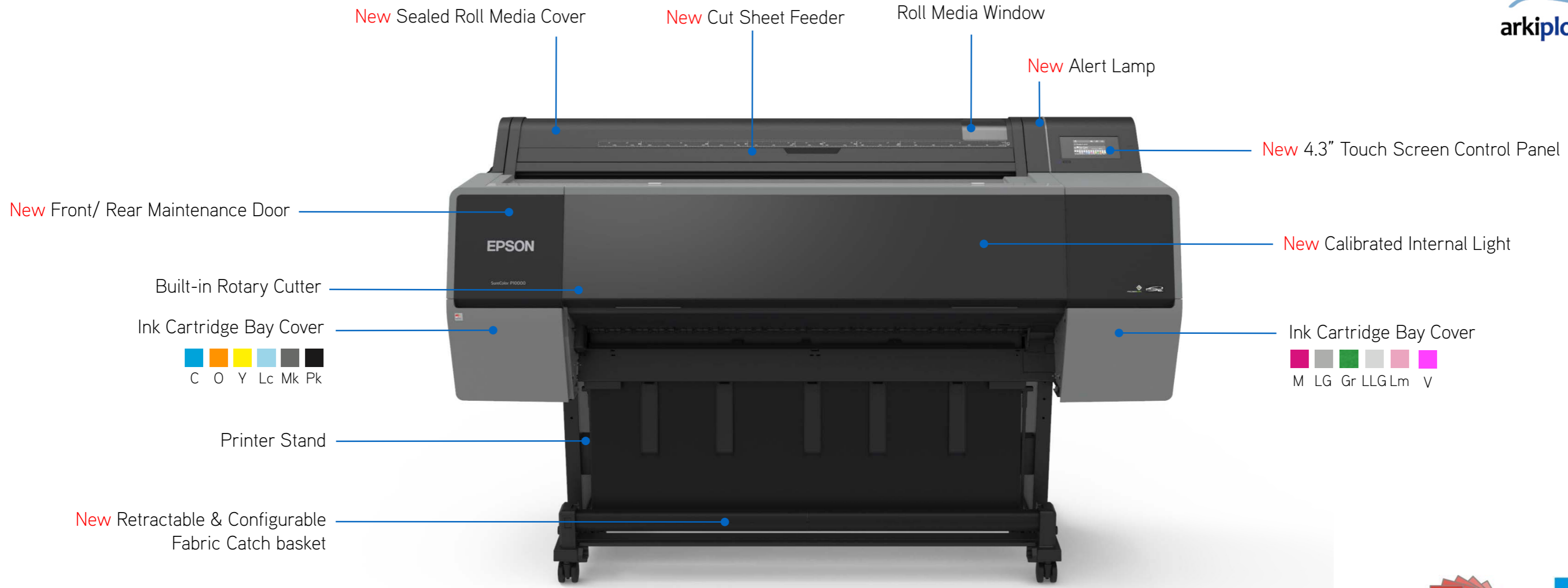


© Tim Tadder

**Epson SureColor P9500
44" Wide**

precio consultar

Printer Overview



44"

Robust Design- 40 lbs heavier than SureColor P7000/9000



Product Overview

SureColor P7500 | P9500



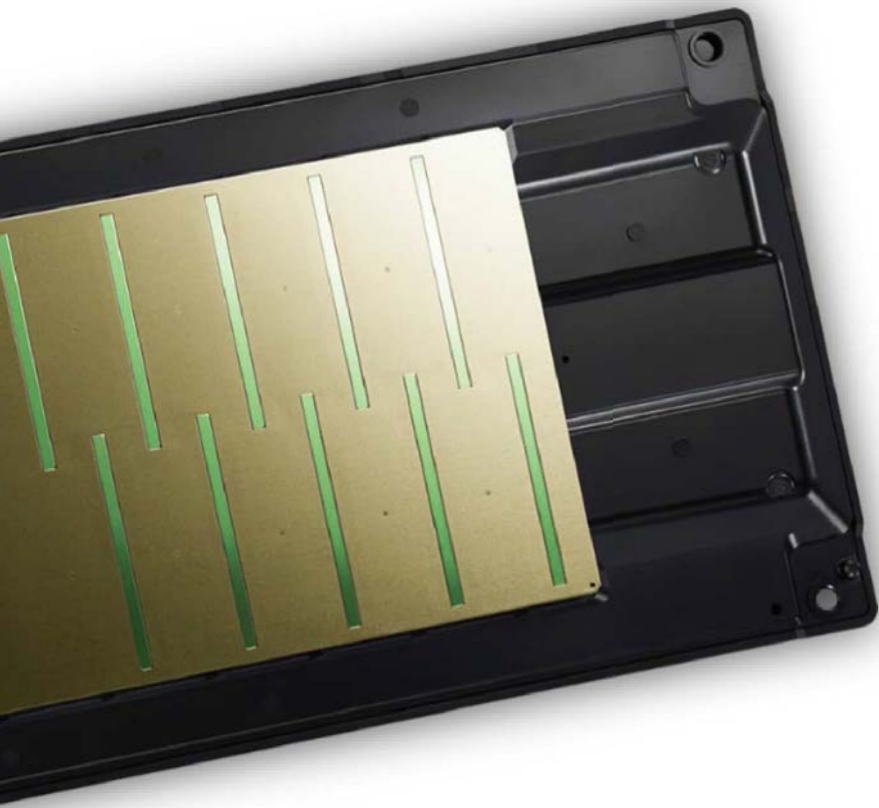
New Internal Printing Light

Gigabit Ethernet, USB 2.0
and Internal Hard Drive Slot

Retractable Fabric Catch Basket

Retractable, configurable media catch basket adjusts to the workflow





Epson PrecisionCore MicroTFP

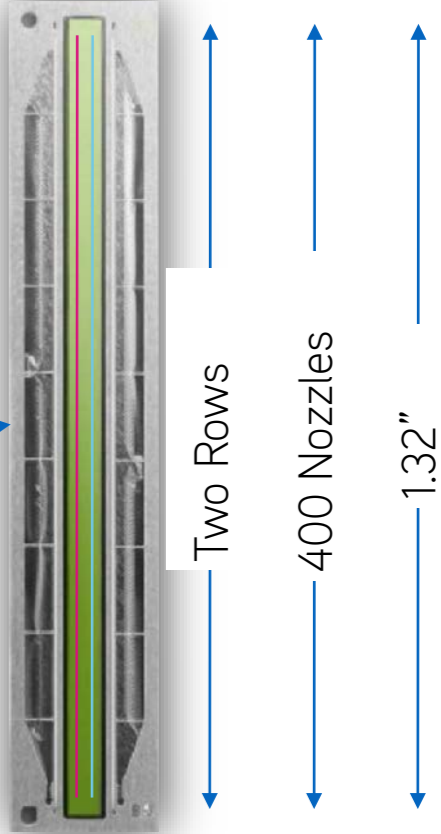
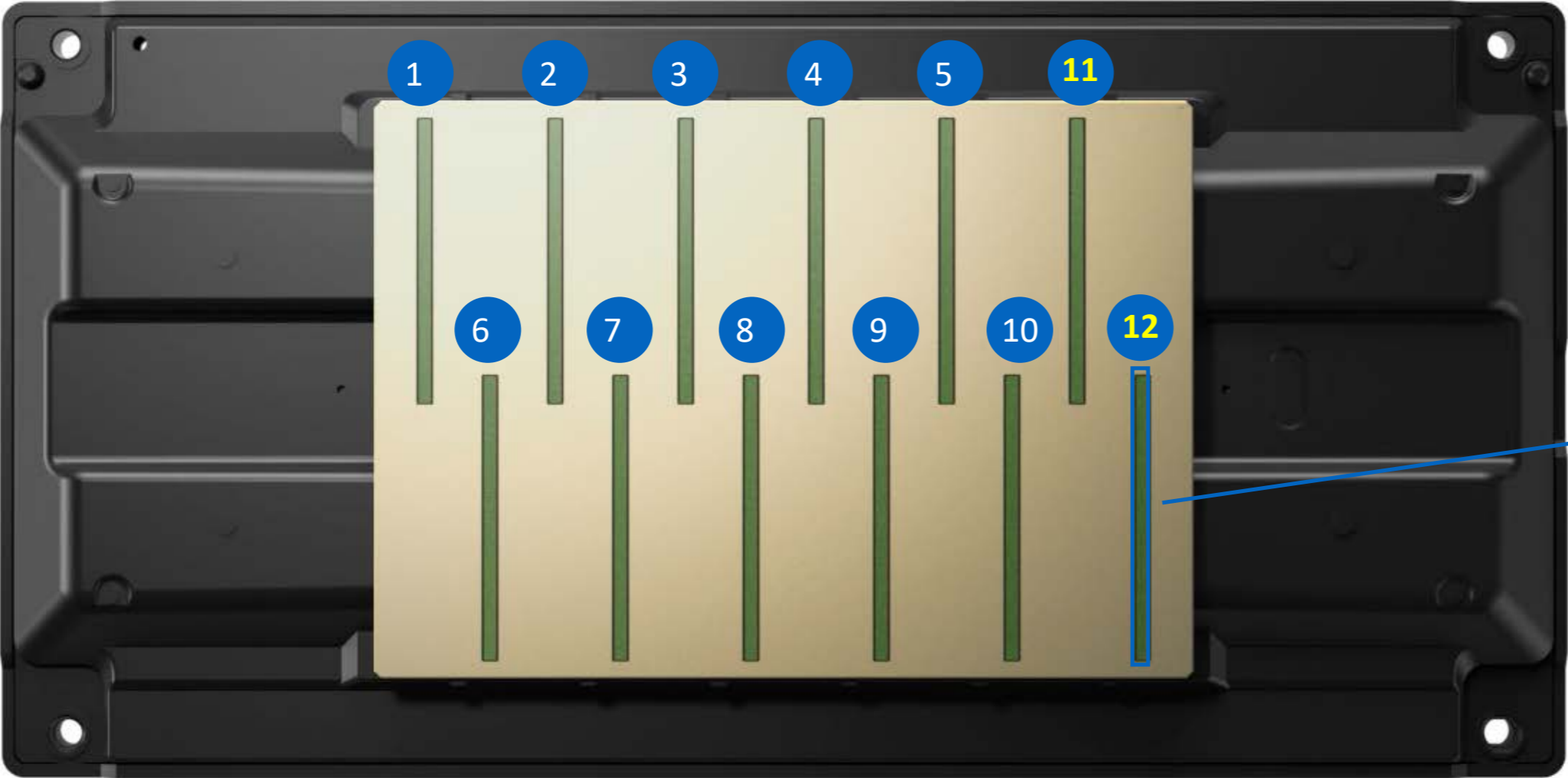
Newly Developed 12-Channel Print Head Technology



PRECISION**CORE**

PrecisionCore MicroTFP Print Head

All-New 12 Channel Industrial Print Head



Industrial Print Head for all Proofing and Photo Printers

The PrecisionCore MicroTFP print head is developed using individual PrecisionCore “blades”.
Each “blade” has two rows - one for each color - across a 1.32” width.
When combined, the final printhead array prints over a 2.64” print width.

Single PrecisionCore Print Chip



PrecisionCore MicroTFP Print Head

SureColor P7500 | P9500



■ Latest Generation PrecisionCore Print Head Array

- Over 9,600 nozzles from a 12-chip print head array
- Droplets as small as 3.5 pl- Incredible accuracy and dot placement capability

■ Dedicated Matte and Photo Black Channels - No Switching

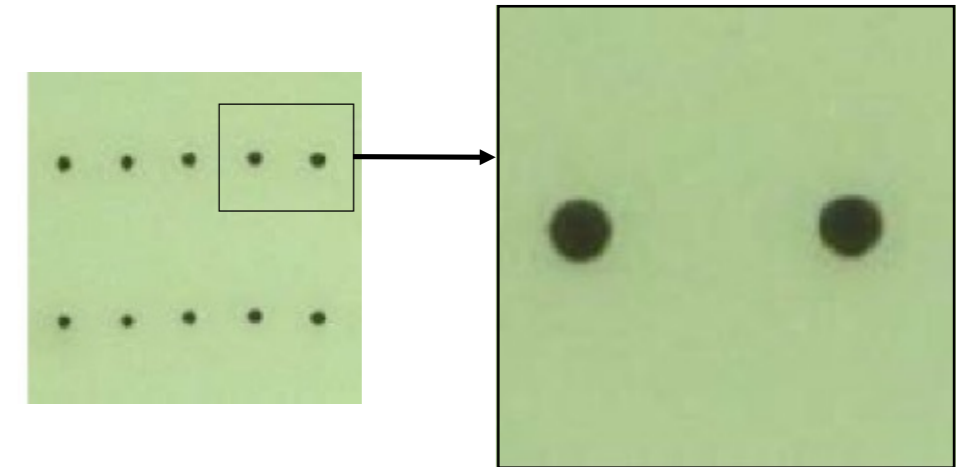
- Faster production workflows with dedicated nozzles for matte & photo black
- Eliminates ink switching when changing between Matte and Photo medias

■ Nozzle Verification Technology

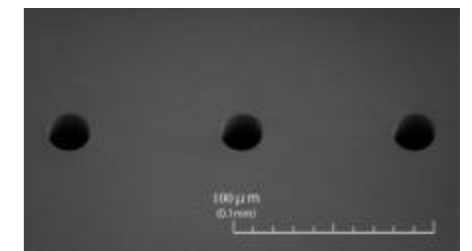
- Automatic maintenance can check nozzle health without using any ink in only microseconds
- User configurable cleaning assures the best print every time

■ Industrial-Level Reliability

- Capable of high-volume printing with very little downtime for maintenance
- New user maintenance doors allow production customers to do simple manual cleanings if necessary



Actual Ink Droplet on Paper
Magnified 150x



Roughly 20 microns in
diameter

Photographic Printing Performance

SureColor P7500 | P9500

	16" x 20" (Centered on 17" x 22")	20" x 30" (Centered on 24" x 34")
600 x 600 HS	1:09	1:57
1,200 x 1,200 HS	1:51	3:04
2,400 x 1,200 HS	3:32	5:59

Print times are based upon start of printhead movement over the page to drop ink – Stop time based on printhead moving to park position

Test Images printed on Epson Premium Luster Photo Paper (260) using a standard ICC color managed workflow via Adobe® Photoshop®

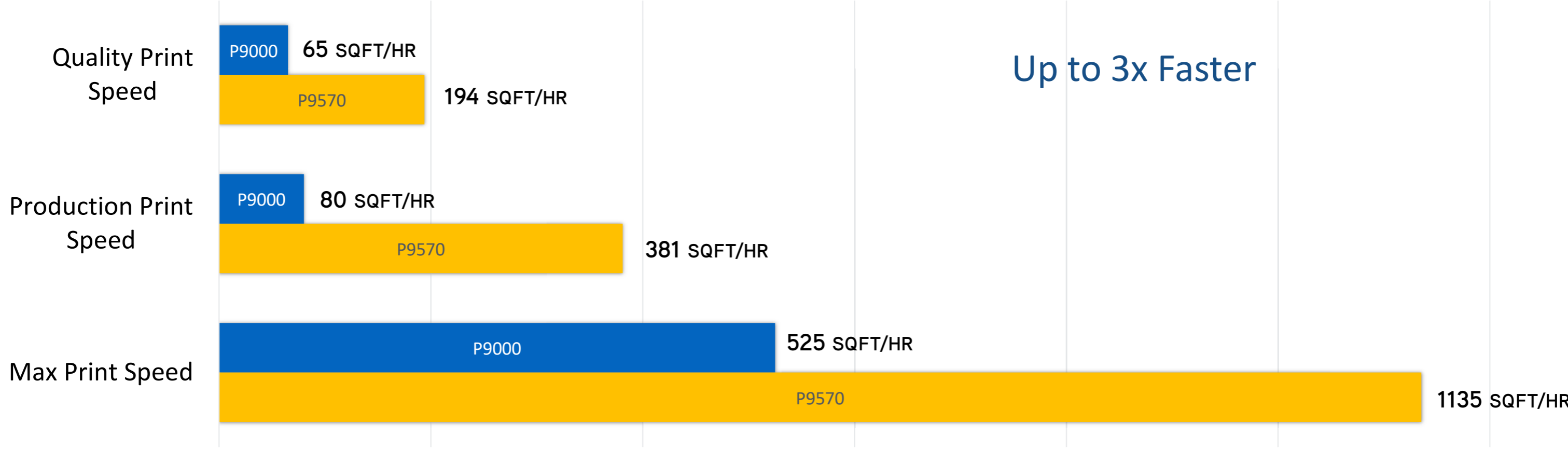
HS = High-Speed Mode (Bi-Directional Print Mode)

Print speeds are shown in min:sec



Print Performance

SureColor P7500 | P9500



Print times are based upon start of printhead movement over the page to drop ink – Stop time based on printhead moving to park position
Quality prints speeds printed on Epson Premium Luster Photo Paper (260) at 1440x720dpi (P9000) or 600x600dpi (P9570)
Production prints speeds printed on Singleweight Matte Paper at 720x720dpi (P9000) or 600x600dpi (P9570)
Max prints speeds printed on Plain Paper at 360x720dpi (P9000) or 300x600dpi (P9570)
Print speeds are shown in square feet per hour



arkipLOT.com

Epson UltraChrome PRO12

Newly Developed 12 Color Ink Technology

ULTRACHROME
PRO12_{INK}

EPSON UltraChrome PRO12

Industry Leading 12 Color Pigment Inkset



■ **Widest Color Gamut in it's class¹**

- Photography: No compromises, widest color gamut and Advanced B&W mode together
- Proofing: Gamut expanding Orange, Green and Violet inks yields a 99% match of the PANTONE Formula Guide solid coated colors.²
- Single SKU – No need for separate Standard and Commercial Edition SKUs



■ **Dedicated Photo Black and Matte Black Channels - No Black Switching**

■ **Industry-Leading Print Permanence³**

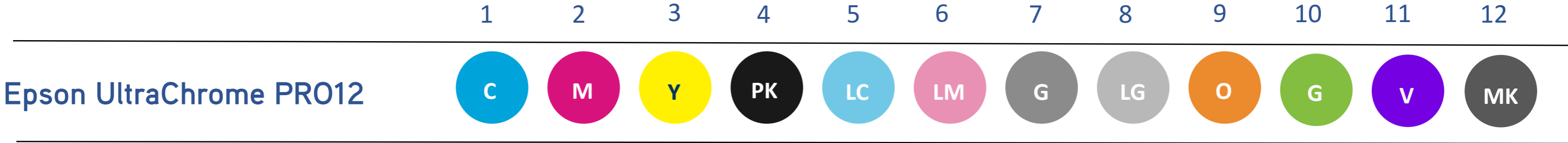
- Print permanence ratings in testing by Wilhelm Imaging Research, Inc.
- Up to 200 years color/ 400 years B&W *(in testing)*

■ **Dramatically Improved Glossy Black Density- Black Enhance Overcoat Technology**

- Higher Dmax on glossy photography without the need for expensive Chroma Optimizer ink

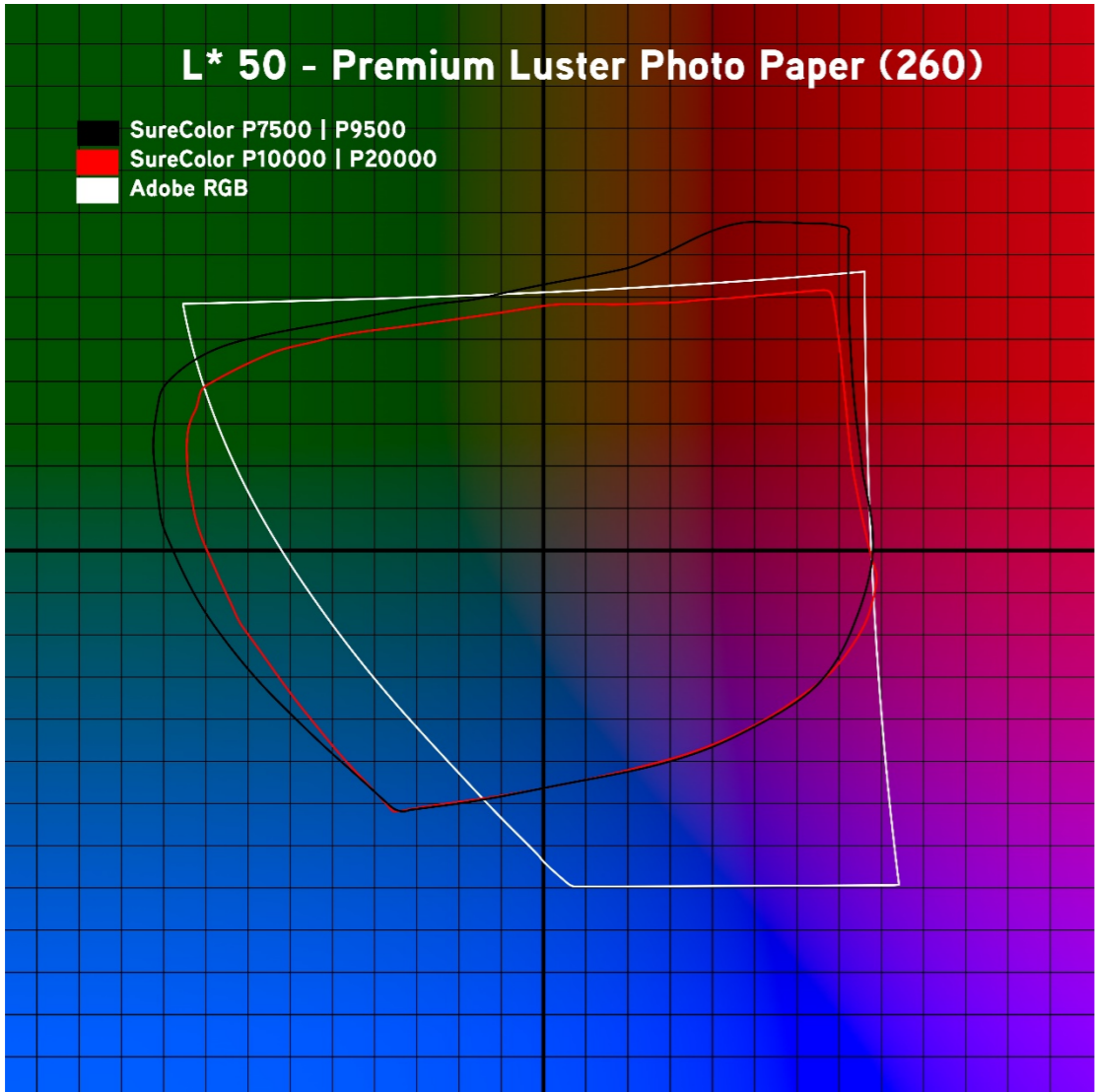


Ink Cartridge Capacities
150 ml | 350 ml | 700 ml

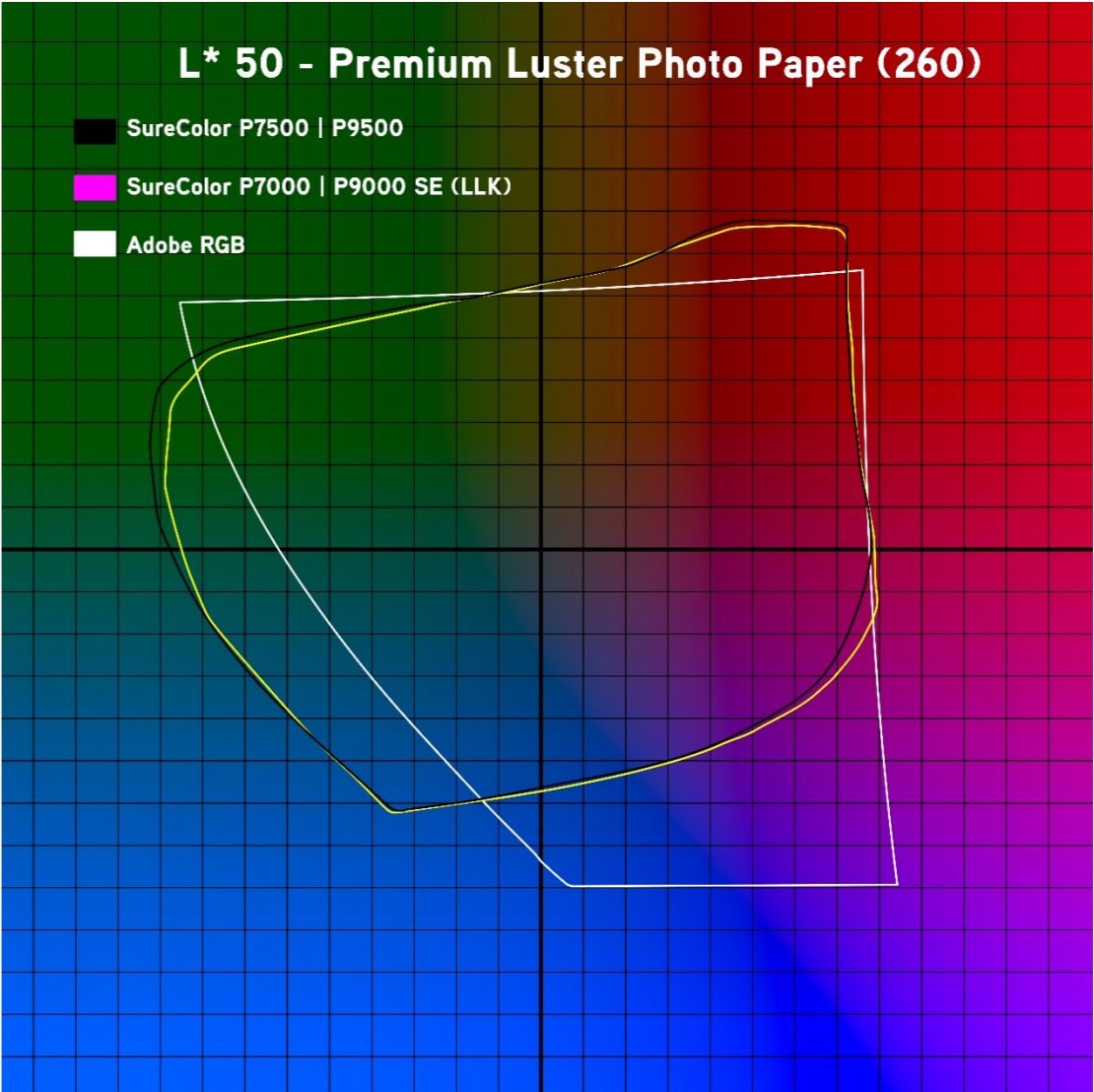


Color Gamut

Industry Leading 12 Color Pigment Inkset



Up to 23% wider than the SureColor P10000

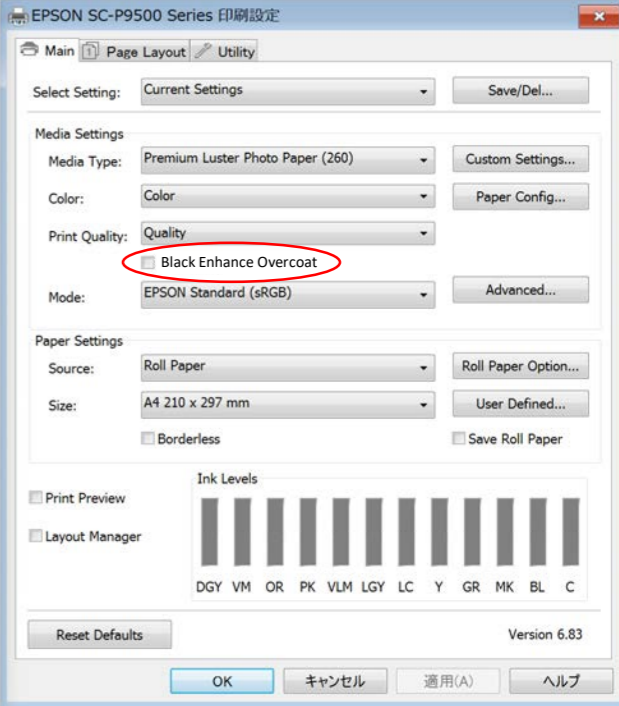


Up to 6% wider than SureColor P9000SE/CE

Black Enhance Overcoat

SureColor P7500 | P9500

- **New print mode for best in class black density- a “wet” look**
 - Special driver mode to improve black density, contrast, and reduced bronzing & gloss differential
 - Optimal results achieved on Glossy/Metallic photographic media
 - Advanced precision screening overcoats deep printed blacks with existing light gray ink
- **No “Chroma Optimizer” or “Gloss Optimizer” dedicated ink channel**
 - Lower additional ink usage (no “flood” coat)



Regardless of how its viewed, blacks will be denser, higher contrast and have a “wet” look.

Presentation graphics enhanced to show effect of Black Enhance Overcoat Function. Actual printed results may vary depending on image and media selected

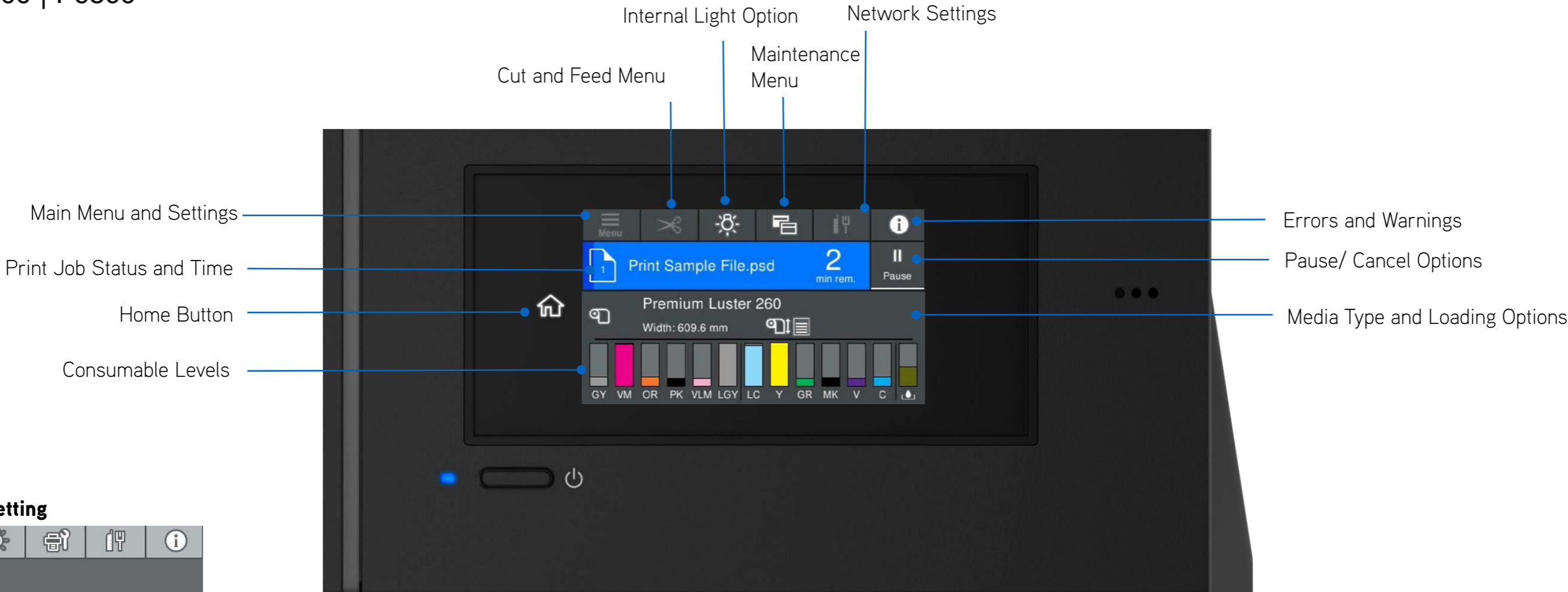


New Print Engine Features

SureColor P7500 | P9500

User Configurable User Interface

SureColor P7500 | P9500



“Light” Color Setting

“Medium” Color Setting

4.3” Touch Screen Control Panel
Customizable Colors / Complexity
Consistent “Home” Button

“Simple/ Operator” Setting

Simple User Maintenance

SureColor P7500 | P9500

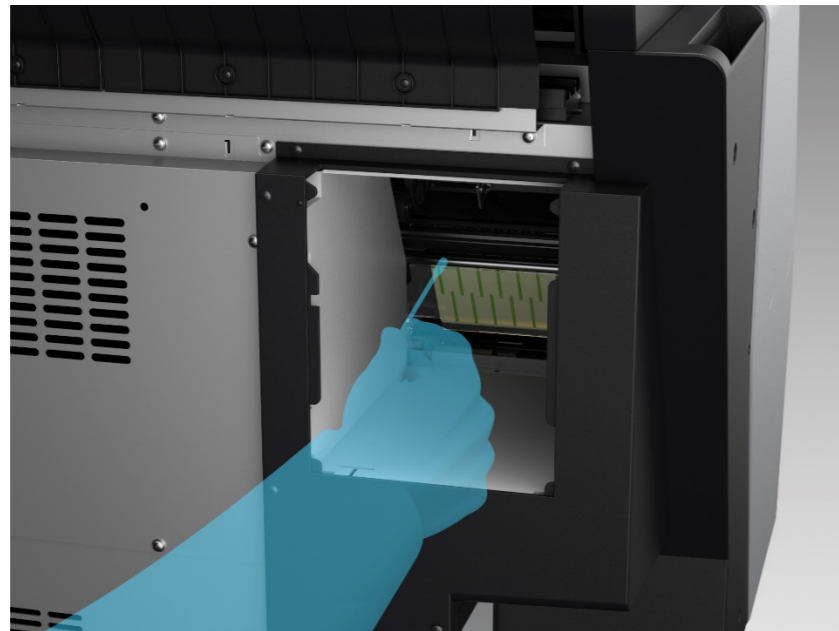


■ Automated Printer Maintenance

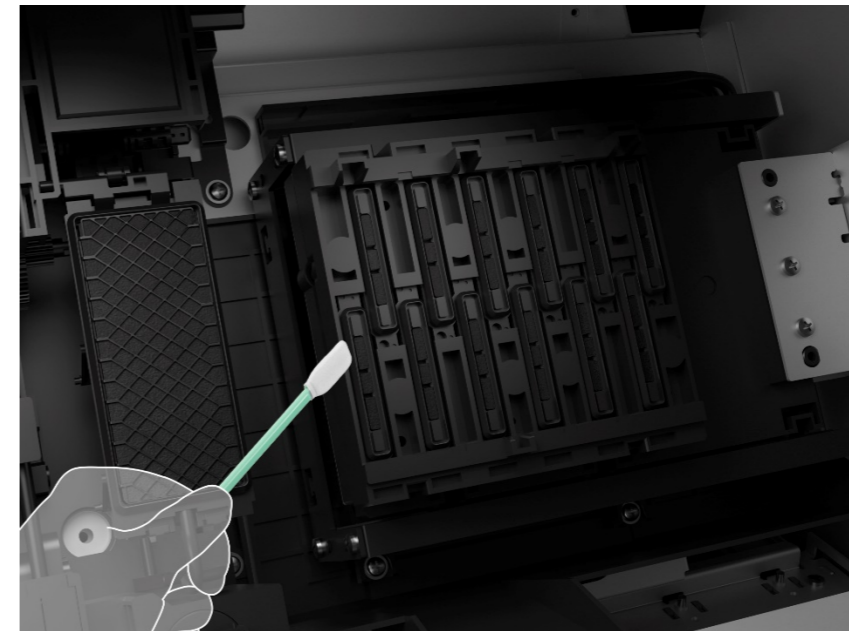
- Head cleaning / auto nozzle check- is all printer controlled to provide the best print quality

■ New user maintenance functions for high productivity users

- Simple quarterly maintenance process using standard supplies
- No service costs or technician required



Cleaning Around The Print Head



Print Head Cap Cleaning



Advanced Media Handling

SureColor P7500 | P9500

Roll Media Handling

SureColor P7500 | P9500

- **Top-Loading Roll Media Support up to 24" Wide (SC-P7570) and 44" Wide (SC-P9570)**
 - Supports most photographic, fine art, and design media types up to 7" in diameter
 - Spindle-Free media adapters adjustable for both 2" and 3" media core media
 - Easy to load- simply opening the roll cover prompts to initiate a load or unload of roll media
- **Roll Media Length Tracking**
 - LCD display and Barcode on media if removed to accurately estimate remaining length
- **BorderFree Printing for Many Popular Print Widths**
 - 10" , 13" , 16" , 17" , 20" , 24" , 30" , 36" , and 44" (30" and above for SC-P9570 only)
 - Excels at printing standard 18" x 24" and 24" x 36" posters fully trimmed ready for pack and ship.
- **Built-in Automatic Rotary Media Cutter**
 - Capable of smoothly cutting most photographic and fine art media types
- **Optional Auto Take-up Reel System**
 - Compatible with SC-P9570 printer and offers forward and reverse wind mode



Cut Sheet Media Handling

SureColor P7500 | P9500

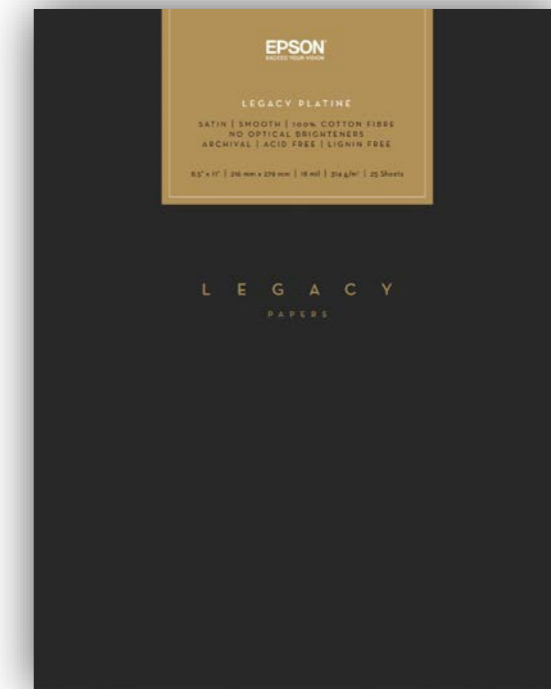
■ **New Top Loading Cut Sheet Media Slot**

- Simple and accurate loading of cut sheet media from 8.5" x 11" up to 44" wide
- Allows for no bend media path without requiring space behind the printer
- Provides for a simple media feeding path for the most delicate media types



■ **Single Sheet Front Straight-Through Poster Board Media Feeder**

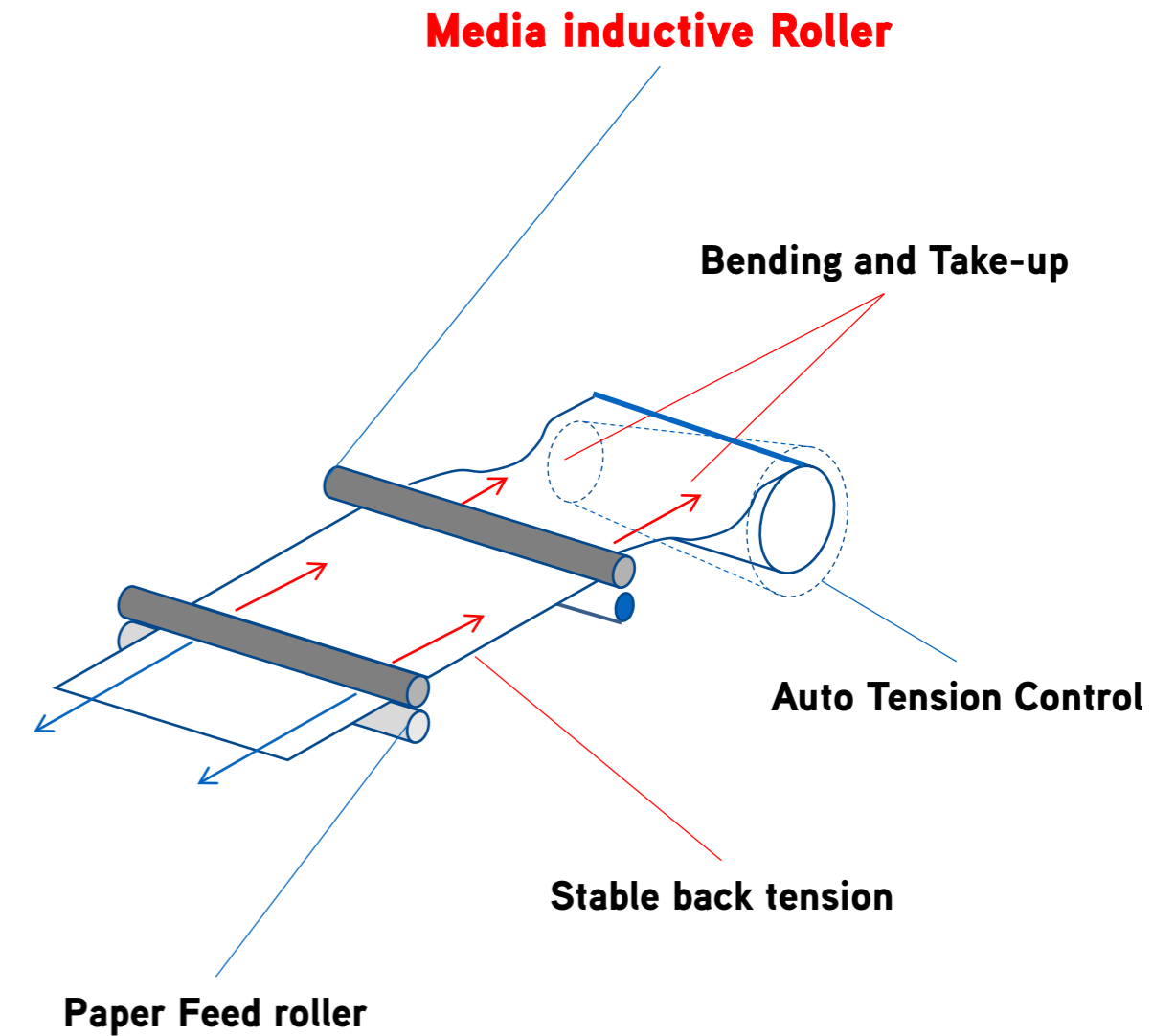
- Simple front feeder for poster board media up to 1.5 mm thick
- Ideal for printing directly to virtually any thick media type
- Supports single sheets from 17" wide up to 44" wide



Inductive Media Roller

SureColor P7500 | P9500

- **Inductive Media Roller System Reduces Paper Feed Error**
 - Assures accurate and consistent feed regardless of the weight of the media roll
 - Consistent back-tension
 - Ensures consistent printing performance from beginning to end of a roll.
- **Simplified Media Loading Process**
 - Easier for operator to load than previous generation printers
 - Automatic loading process- just open the media roll cover
 - Reduced media skew



Consistent, repeatable media feed for sellable-quality prints at high production speeds

Epson Media Installer Software

SureColor P7500 | P9500



Epson Media Installer

■ **Epson Media Installer Software Simplifies Media Management**

- Single, customized, media list on printer driver and control panel
- Unified Settings: Print Driver, Printer Control Panel, and Profiles
- Updates available from a central server – Accessed from the driver (PC) or a included Utility (MAC)

■ **Eliminates complex media installation process – One step process to...**

- Download existing and newly release Epson Genuine Media with ease
- Optimal mechanical parameters of the printer are automatically configured
- ICC profiles installed and ready to use on macOS and Windows operating systems

Loading Epson media is now simple and is integrated into the driver to provide the best results





Options and Accessories

SureColor P750 | P950

Options and Accessories

SureColor P7500 | P9500

■ **Optional Self-Encrypting 320 GB Internal Print Server**

- Manage jobs at the printer control panel, or remotely via a built-in web interface
- Quickly offloads print data from multiple workstations simultaneously
- User-installable option and can be upgraded at any time
- Advanced security with IPsec and IEEE802.1x authentication protocols

■ **Embedded Adobe® PostScript® Server**

- Directly print PostScript Files (PDF, EPS) and Raster Files (JPEG, TIFF, Cals-G4, etc)
- User-installable option and can be upgraded at any time
- For Hotfolder and PC-free Postscript operation

■ **Take -Up Reel**

- Uses existing P-Series Take-up reel.



Standard Internal Print Server
320 GB



Epson SpectroProofer

SureColor P7500 | P9500

■ Epson SpectroProofer Compatible

- Optional 24- or 44-inch wide spectrophotometer developed jointly by X-Rite
- Simple installation; fits cleanly into the front of the printer
- Illuminate support for M0, M1 and M2, meets all standards (UV and Non UV Cut)
- Both black and white interchangeable backing plates included
- Built-in print dryer to accelerate the dry-down and reading process
- Supported by industry leading workflows: AGFA, CGS, EFI, Fuji, GMG, Onyx
- Previous generation SpectroProofers used on Epson Stylus Pro Printers are compatible when upgraded with the optional ISL30EP Spectrophotometer head.



X-Rite ILS30EP

Meets or exceeds all Industry standards and provides a simple proofing workflow

Industry Software Support

SureColor P7500 | P9500

■ Broad Industry Support from Leading Software Workflow Solutions

- Aurelon; Print Factory
- Caldera; Visual RIP+
- CGS; Oris ColorTuner/WEB
- GMG Color
- ColorByte, Imageprint
- ColorGate; Production Server
- Dinax; Mirage
- EFI; Fiery XF
- ErgoSoft
- Onyx; Thrive, Production House, PosterShop and RIP Center
- Serendipity; Black Magic



Innovative Solutions
Committed to Color



Warranty & Customer Support

SureColor P7500 | P9500

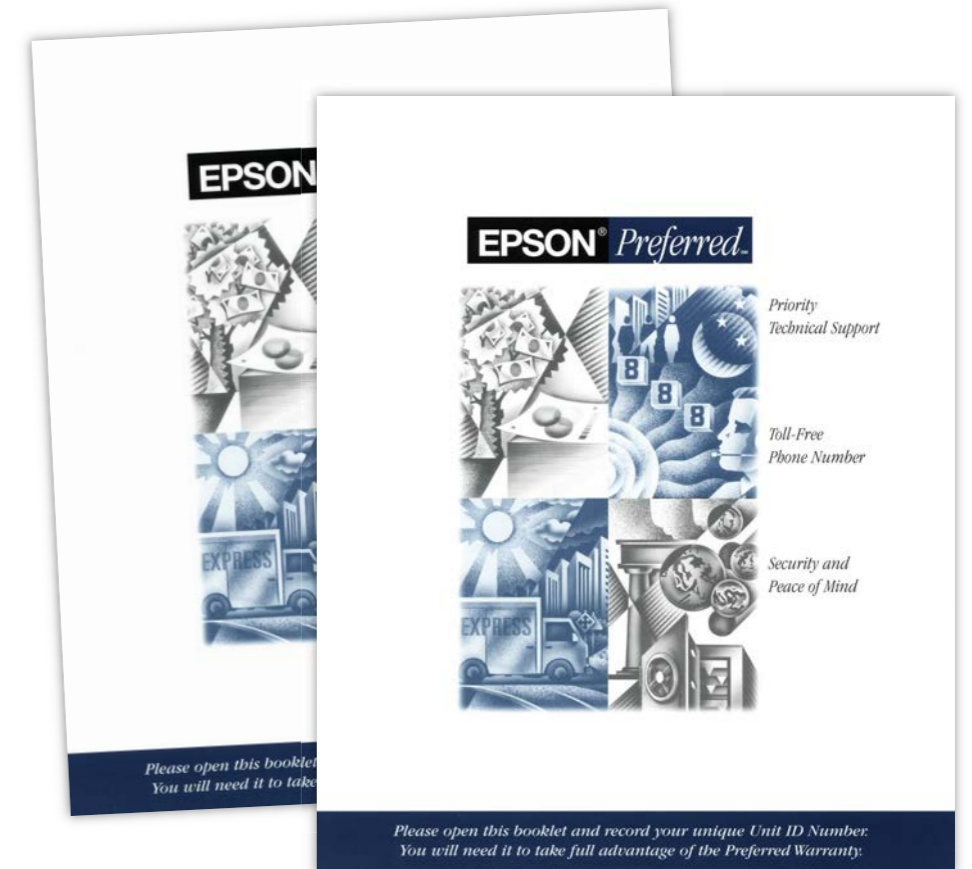


■ **Standard 1-Year Epson PreferredSM Limited Warranty**

- Free technical support Monday thru Friday
- If required, onsite service provided - usually next business day*
- Covers the printer, genuine Epson optional accessories, and software

■ **Optional 1- or 2-Year Epson Preferred Plus Premium Service and Support Plans**

- Extends same Epson coverage when the standard limited in-box warranty ends
- Can be purchased at any time while still under an Epson Preferred Limited Warranty
- Provides up to 3-years of complete coverage from Epson



* Limitations apply. See www.Epson.com/support for details.

What's New?

SureColor P7500 | P9500

- **High performance, industrial PrecisionCore microTFP print head**
 - 2.4 times the print speed of the current SC-P9000 printer
- **UltraChrome PRO12 12-Color Ink Technology**
 - Widest color gamut in its class¹
 - No Photo Black/ Matte Black switching required
- **Black Enhance Overcoat Technology**
 - Industry leading black density on glossy media
- **Industrial Hardware Design**
 - High reliability components- over 40lbs heavier
 - New catch basket design - Catch media underneath the printer or face-up for delicate media types
- **User Interface Design**
 - 4.3" user customizable touchscreen interface
- **Media Inductive Roller and Loading**
 - Accurate and fast media feeding with no quality compromise. Consistent quality from the beginning to the end of the roll
- **Variety of Options and Accessories Available**
 - Optional Internal HDD (print server), Adobe Postscript Server, or Take-up Reel allows customers to configure the printer to their needs
- **Production User Maintenance**
 - Automatic maintenance for normal users; Simple user self-service for routine cleaning and maintenance for production users
- **Epson Media Installer**
 - Easy to configure and load Epson photographic and fine art media (Signature Worthy, Legacy, etc)



Ordering Information

SureColor P7500 | P9500

HARDWARE & ACCESSORIES

Description	Part Number
SureColor P7500 Printer– Standard Edition	SCP7500SE
SureColor P9500 Printer– Standard Edition	SCP9500SE
Optional 320 gb internal Hard Drive	C12C934551
Optional Internal Adobe PostScript Module	C12C934571
Additional Roll Media Adapters	C12C811241
Optional Take-up Reel (SC-P9570 only)	C12C815321
Spectroproofer (SC-P7570)	7109101
Spectroproofer (SC-P9570)	7109102
X-Rite ILS30EP Spectrophotometer head (head only)	C12C932021
Additional 1-year Epson Preferred Plus Service	EPP900B1
Additional 2-year Epson Preferred Plus Service	EPP900B2

CONSUMABLES

Description	Part Number
Maintenance Tank	T699700
Replacement Cutter	C12C815331
Replacement Borderless Pads	C13S210102
Maintenance/ Cleaning Sticks	C13S090013

INK

Description	150 mL	350 mL	700 mL
Photo Black	C13T44W120	C13T44Q140	C13T44J140
Cyan		C13T44Q240	C13T44J240
Vivid Magenta		C13T44Q340	C13T44J340
Yellow		C13T44Q440	C13T44J440
Light Cyan		C13T44Q540	C13T44J540
Vivid Light Magenta		C13T44Q640	C13T44J640
Gray		C13T44Q740	C13T44J740
Matte Black		C13T44Q840	C13T44J840
Light Gray		C13T44Q940	C13T44J940
Orange		C13T44QA40	C13T44JA40
Green		C13T44QB40	C13T44JB40
Violet		C13T44QC40	C13T44JC40

Specifications are Subject to Change Without Notice

1. Compared to 24-inch and 44-inch aqueous based printers priced at \$7,000 (USD) or less when printed on Epson Proofing Paper White Semimatte printed with the Epson Driver at 2400 x 1200 dpi.
2. 99% achievement of the PANTONE PLUS Solid coated colors is based on the use of Epson Proofing Paper White Semimatte printed with Epson UltraChrome HDX ink with Violet. PANTONE coverage may vary when printed under other conditions.
3. Ink lightfastness rating based on accelerated testing of prints on specialty media, displayed indoors, under glass. Actual print stability will vary according to media, printed image, display conditions, light intensity, humidity and atmospheric conditions. Epson does not guarantee longevity of prints. For maximum print life, display all prints under glass or lamination or properly store them.

For details see: <http://www.wilhelm-research.com>

Epson, MicroPiezo, PrecisionCore, PrecisionDot, UltraChrome, SpectroProofer, SureColor and MicroTFP are trademarks or registered trademarks, Epson Preferred is a service mark, and EPSON Exceed Your Vision is a registered logo mark of Seiko Epson Corp.

All other product brand names are trademarks and/or registered trademarks of their respective companies.
Epson disclaims any and all rights to these trademarks.

© Epson America, Inc. 2020 RH Dec 2019/ v2



 (+34) 968 722 350

 arkipLOT@arkipLOT.com

